



Regional Authority FrankfurtRheinMain

Spatial Data and Urban Planning

-

how they are interlinked

**European Workshop – A Service Platform For Aggregation, Processing and Analysis
of Urban and Regional Planning Data**

Brussels, 29.November 2013

Norbert Janiesch, Department Manager Geoinformation

janiesch@region-frankfurt.de, www.region-frankfurt.de

Regional Authority FrankfurtRheinMain

- Poststraße 16, 60329 Frankfurt am Main
- www.region-frankfurt.de
- defined in the Act on the Metropolitan Region FrankfurtRheinMain; effective since 1 April 2011
- approx. 120 members of staff
- budget totaling approx. € 15 million
- funding: member municipalities pay a levy to the association

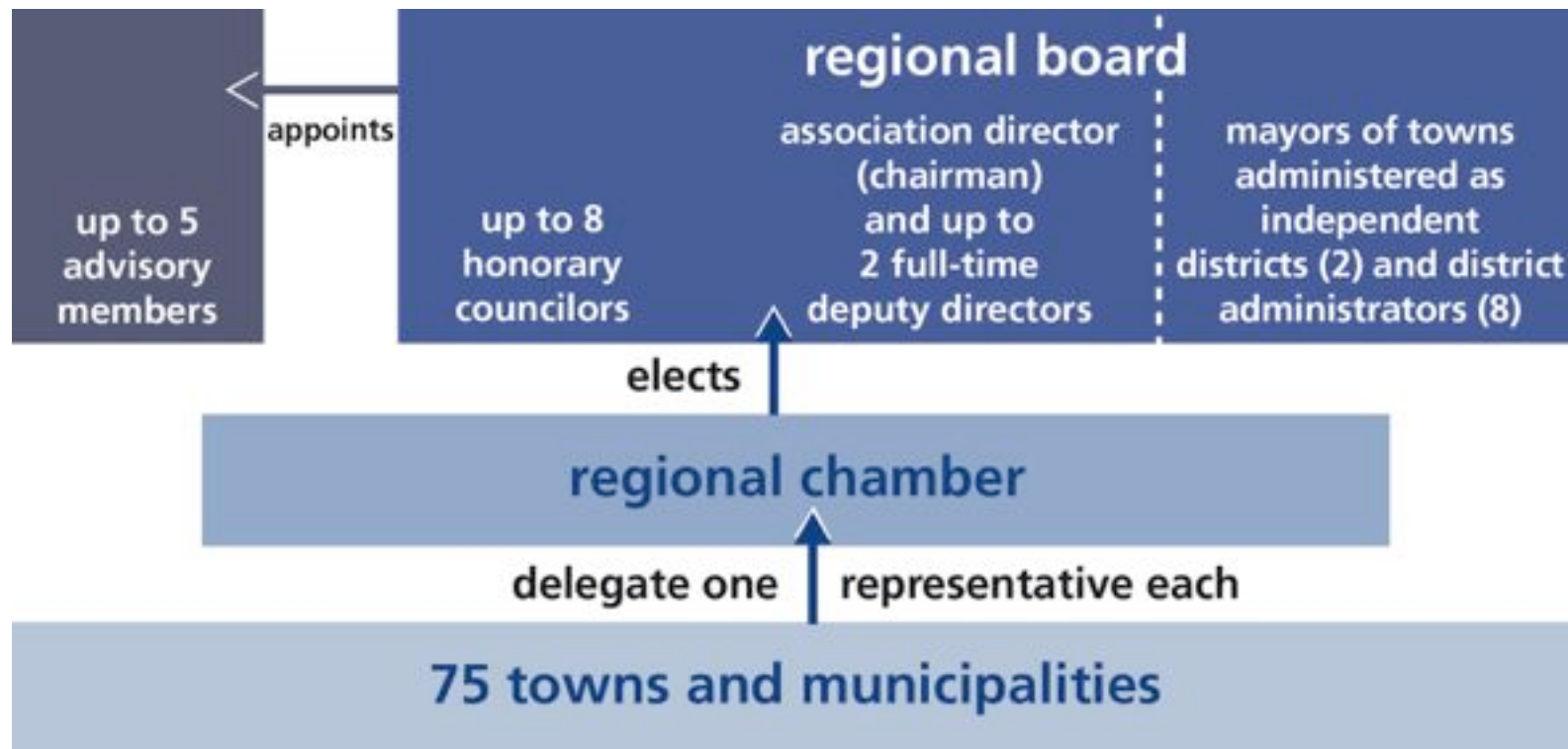


Members – Territory of the Regional Authority

- 75 members
- members include Frankfurt am Main, Offenbach am Main, Hanau, Rüsselsheim and Bad Homburg v. d. Höhe
- average levy paid to the association: € 5.66 per capita



Organizational chart – Regional Authority



Regional Authority director: **Ludger Stüve**
first deputy director: **Birgit Simon**

(both elected for a term of six years)

Tasks

- controlling and coordination of the regional development
- platform for the strategic alignment of regional associations
- development of a joint identity and profile for the region
- elaboration and update of the regional preparatory land-use plan
- regional monitoring
- advisory service for subsidies
- municipal services

Territory of the Regional Authority – facts and figures

- 2.2 million inhabitants
- area of 2,500 square kilometers;
28 percent are built-up and transport areas
- one million gainfully employed persons;
82 percent of them work in the services sector
- GDP: € 48,500 per capita (2010)
Comparison: Hesse € 37,200*
Germany € 32,600**

(* 2011, data from 03/2013;

** 2012, data from 08/2013)



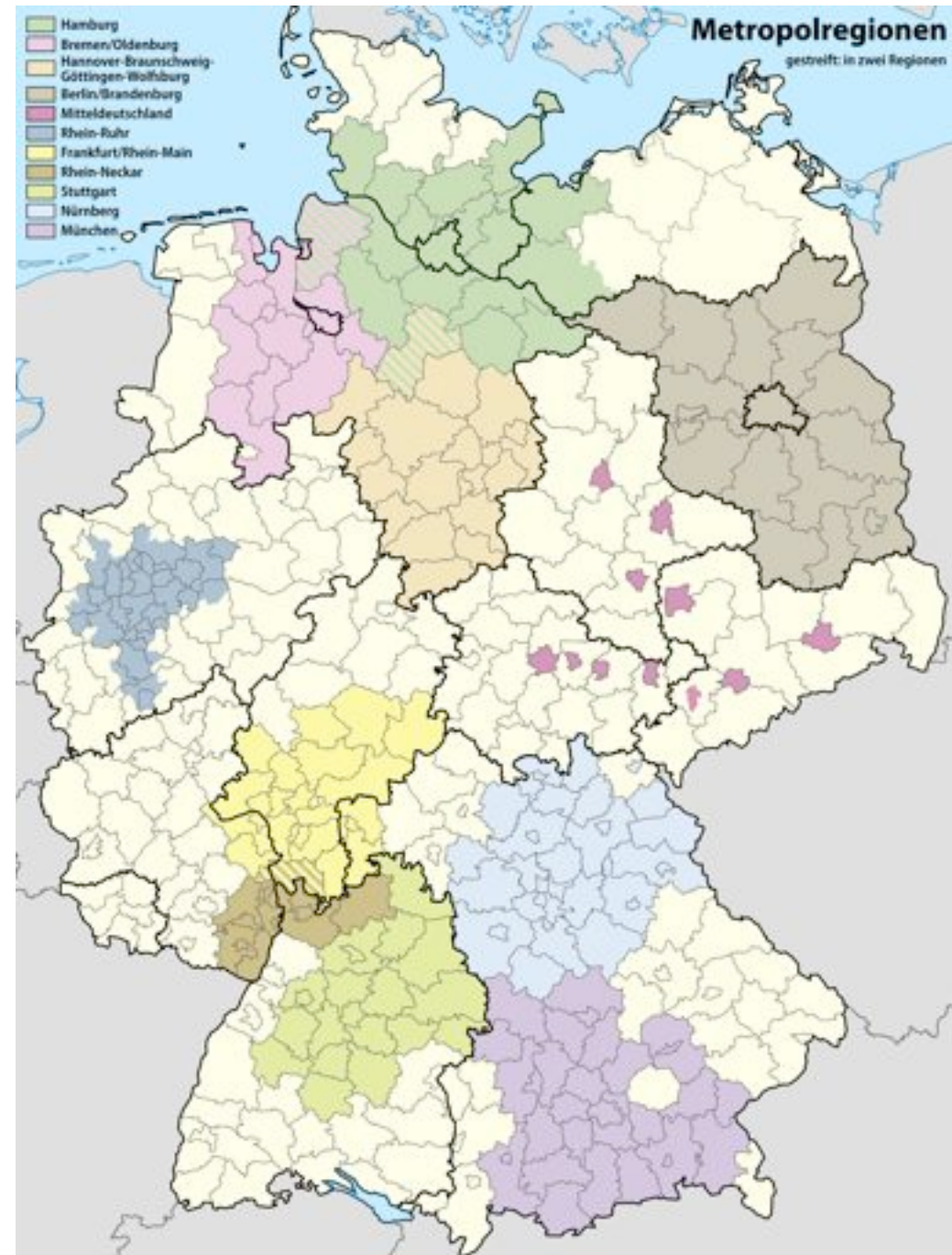
Associations under the umbrella of the Regional Authority

- FrankfurtRheinMain European Office
- Wirtschaftsförderung Frankfurt RheinMain Region
Business Promotion Corporation
- FrankfurtRheinMain –
Verein zur Förderung der Standortentwicklung e.V.
Association for Promoting the Region as a Business Location
- KulturRegion FrankfurtRheinMain gGmbH
Cultural Region Corporation



Metropolitan Region FrankfurtRheinMain

- The Regional Authority also represents the Metropolitan Region.
- FrankfurtRheinMain is one among eleven recognized metropolitan regions in Germany.
- covers areas in three federal states (Hesse, Bavaria, Rhineland Palatinate)
- 468 municipalities
- 5.5 million inhabitants
- area of 14,800 square kilometers
- 2.1 million gainfully employed persons
- GDP: € 37,200 per capita (2010)



Features of the Metropolitan Region FrankfurtRheinMain

- transport hub in Germany
- high share of services industry, including banks and insurance companies
- international orientation
- four nearby minor mountain ranges: Odenwald, Spessart, Taunus, Vogelsberg
- polycentric structure



Spatial Data and Urban Planning - Sources

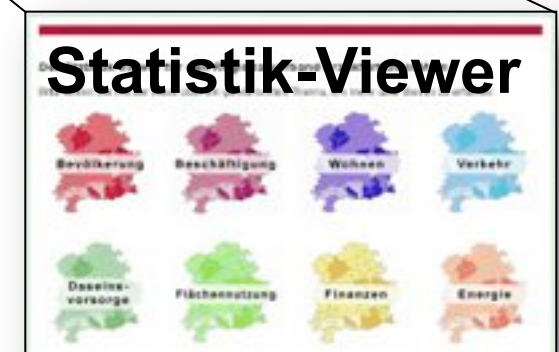
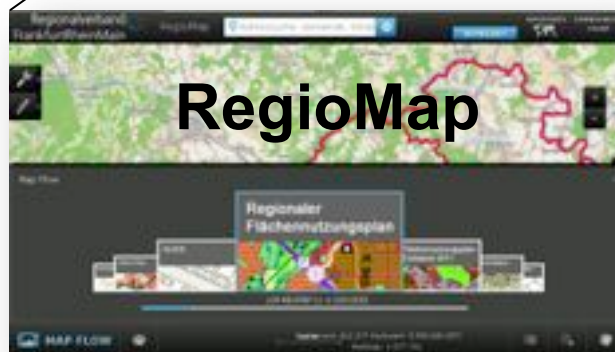
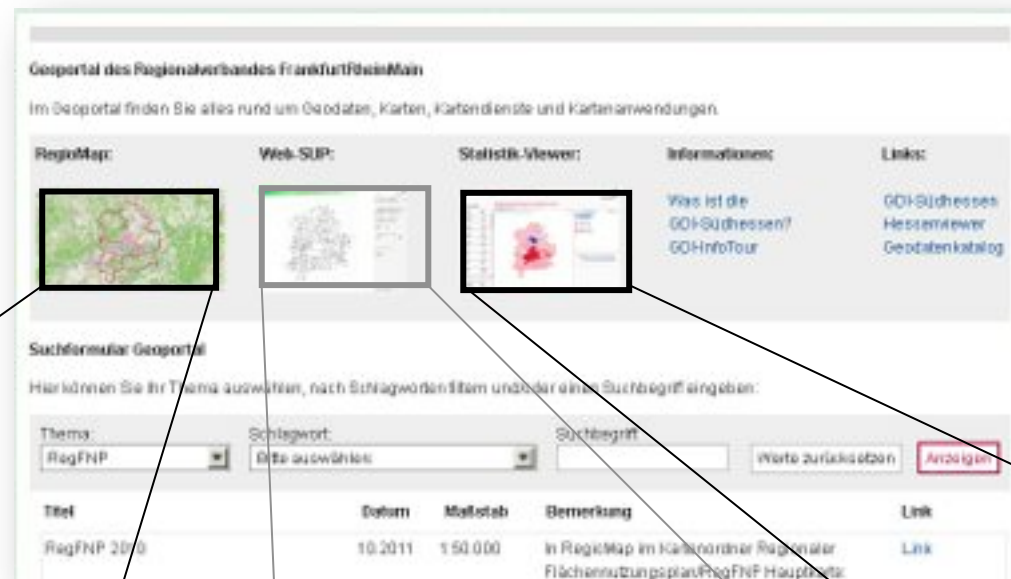
- Base-Data for Basemaps – State of Hesse, HLBG
- Enviromental Data – State of Hesse, RP Darmstadt, HLUG, Consulting
- Restrictions – enviromental and planing acts
- Local land use planning – 75 municipalitys
- Infrasructure data – Public and private institutions and companies
- Statistical and monitoring data of the regional development (demographie, building, economics, transport, powering) - State of Hesse, Fedaral State of Germany, Consulting Companies, academic institutions

how they are interlinked

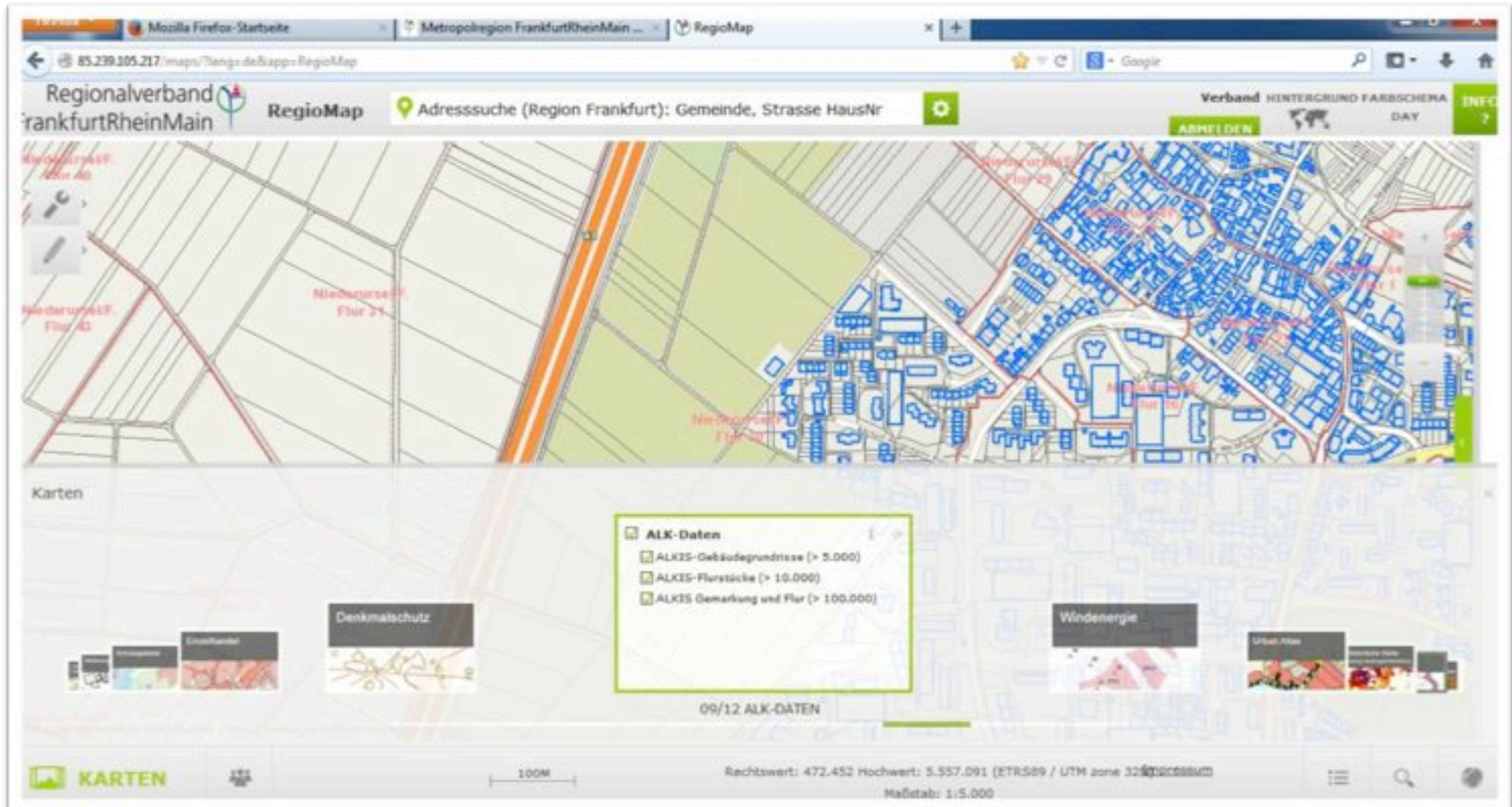
- Base-Data for Basemaps – geometry quarry for own data aggregation
- Environmental Data and Restrictions – conflict detection
- Land Use Planning in municipalities – comparing and transfer/update
- We aggregate, geoprozess, sample answering planning questions
- We distribute our data back to regional actors

Geodata integrated and interlinked in a webplatform

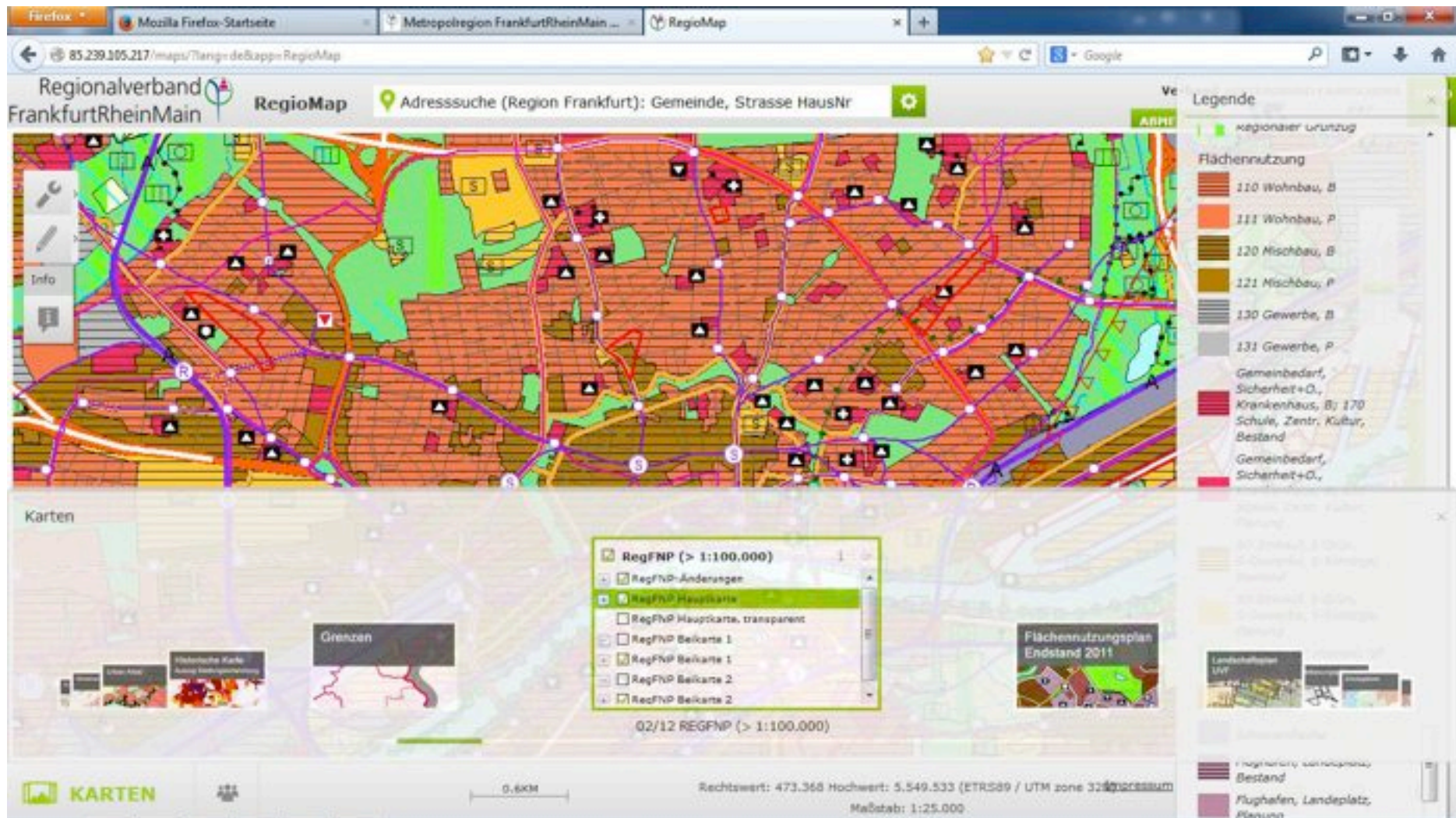
Geoportal



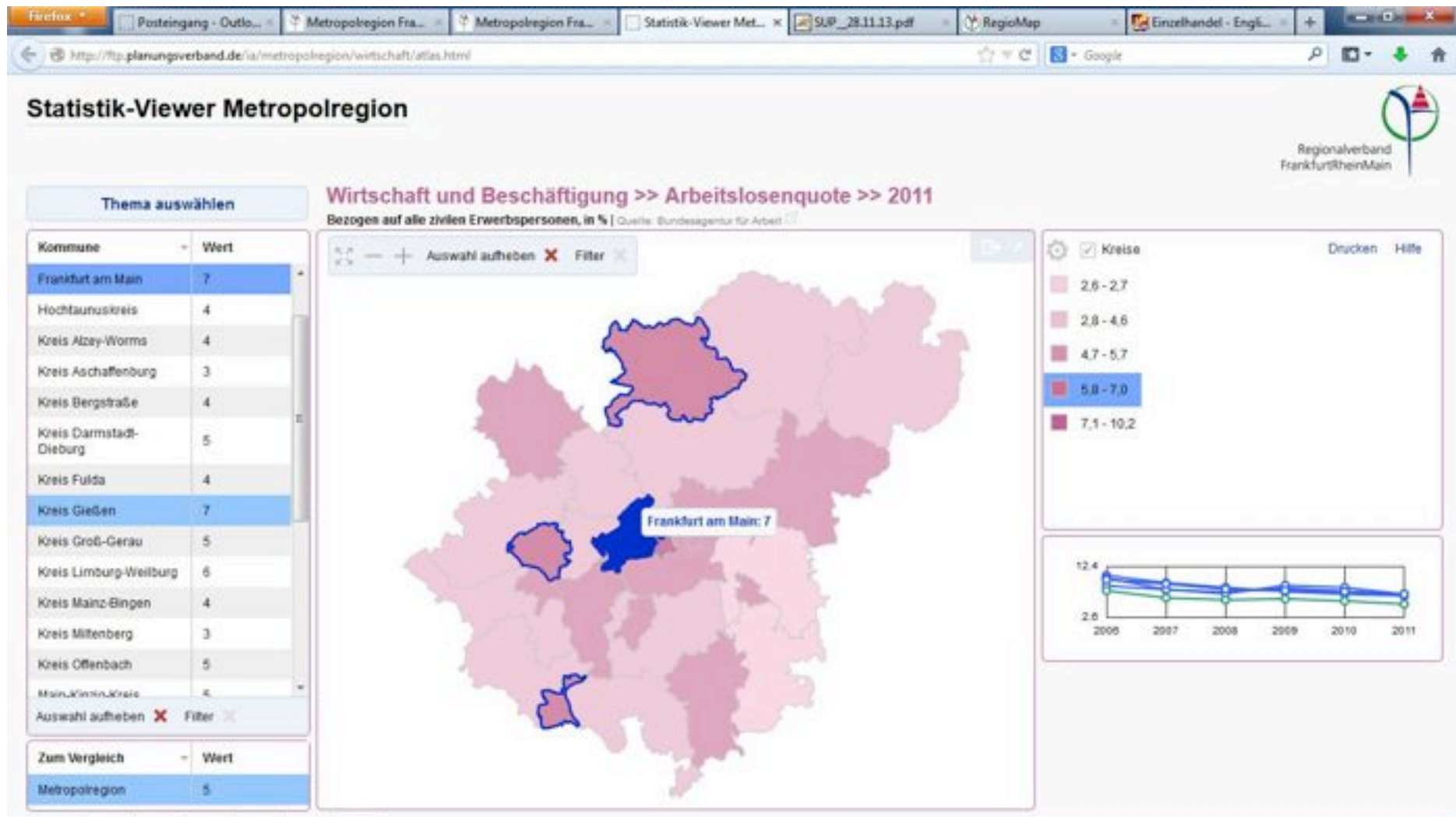
Geodata integrated and interlinkt in a Webplatform



Geodata integrated and interlinkt in a Webplatform



Geodata integrated and interlinkt in a Webplatform



conclusion

300 regional acteurs involved in the planning Porcess

Spatial data infrastructures are needed to interact effectively

This is accepted

But INSPIRE is not in focus of local goverments

Local goverments do not see the benefit

Can INSPIRE help us?

Thank you very much
for your attention!